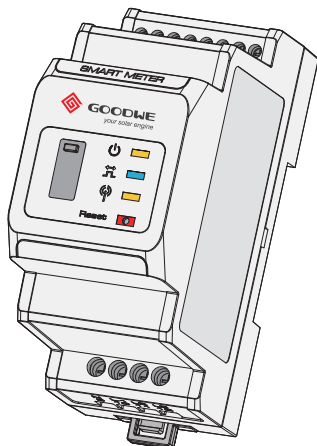


# Smart Meter

## USER MANUAL



Kun Lun Shan Road 189, Suzhou, Jiangsu, China 215000  
service@goodwe.com | www.goodwe.com

## 01 INTRODUCTION

GoodWe Smart Meter is designed with high precision small dimensions, convenient operation and installation. It is available for both single-phase and three-phase grid system connection to detect voltage, current, power and energy, for working with inverters including SEMS systems for the purpose energy management.

Any fault or damage caused by misoperation or disobeyal against the rules on manual is beyond GoodWe warrenty cover range.

### PACKING LIST

1* Smart Meter	1* CT (Current Transformer) <sup>[1]</sup>
1* Screw Driver	4* Cable Connection Terminals
1* USB Seal	1* RJ45-to-Pin Cable <sup>[2]</sup>

### NOTE:

[1] A three-phase Meter will contain 3 CT clamps.

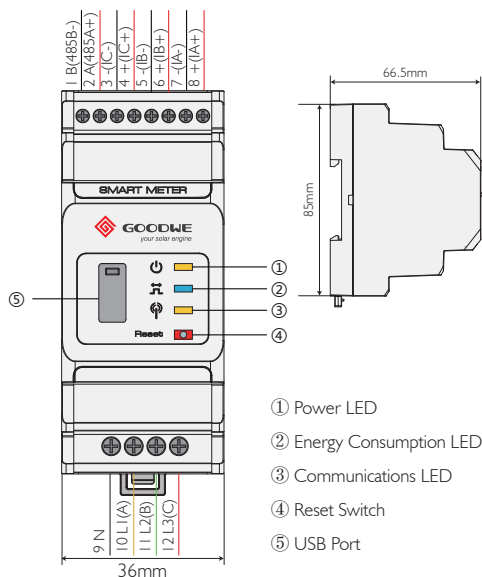
Specifications are subject to the physical product.

[2] Only suitable for RS485 cable connection on RJ45 port of GoodWe hybrid inverters.

01

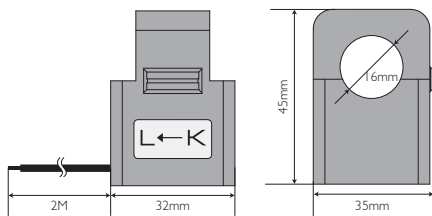
## 02 OVERVIEW

### 2.1 SMART METER OVERVIEW



- ① Power LED
- ② Energy Consumption LED
- ③ Communications LED
- ④ Reset Switch
- ⑤ USB Port

### 2.2 CT OVERVIEW



## 03 INSTALLATION INSTRUCTION

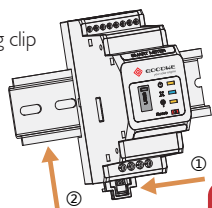
### 3.1 INSTALLATION ENVIRONMENT

Protection Class: IP20 (for indoor use)

Operating Temperature: -20~60 C

### 3.2 INSTALLATION (with DIN track)

- ① Pull to release the retaining clip
- ② Mount the Meter on the track and push the retaining clip up (a click sound indicates it is installed well)



02

03

